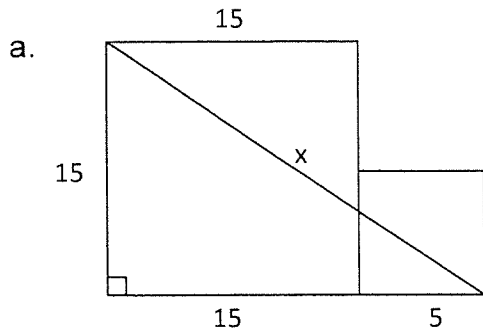
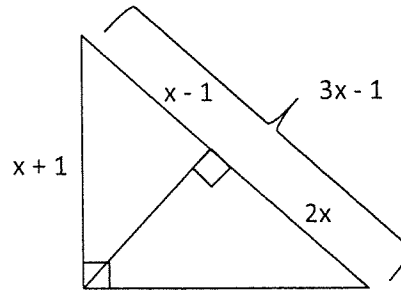


Geometry (H)
Chapter 8 – More Review Problems

1. Find x .



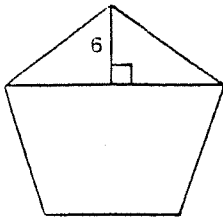
b.



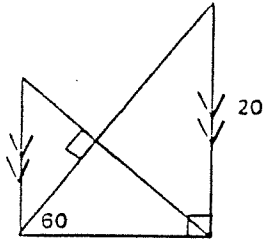
2. A rectangular prism has dimensions $2 \times 6 \times 8$. Find the length of the diagonal of the box.

3. Given isosceles trapezoid with sides 5, 10, 17, 10, find the measure of all the angles of the trapezoid.

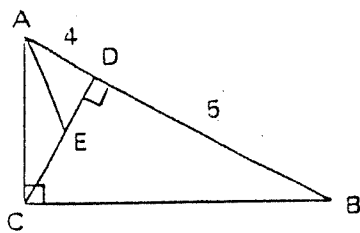
4. Find the perimeter of the regular pentagon. Round the answer to the nearest tenth.



5. Find all missing lengths of the figure below.



6. Find DE. \overline{AE} bisects $\angle CAD$.



7. $AF = \sqrt{41}$ $BE = 2\sqrt{26}$ Find AB.

