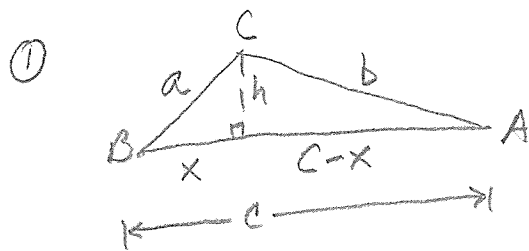


Law of Cosines thru KEY



⑤ $p \approx 25.0$
 $m\angle R \approx 42.3^\circ$
 $m\angle Q \approx 15.0^\circ$

⑦ $m\angle P \approx 25.2^\circ$
 $m\angle R \approx 58.4^\circ$
 $m\angle Q \approx 96.4^\circ$

⑨ $m\angle R \approx 93.8^\circ$
 $m\angle Q \approx 29.9^\circ$
 $m\angle P \approx 56.3^\circ$

⑩ $b \approx 6.5$
 $m\angle A \approx 64.7^\circ$
 $m\angle C = 37.3^\circ$

⑬ $m\angle A \approx 94.6^\circ$
 $m\angle B \approx 39.8^\circ$
 $m\angle C = 45.5^\circ$

⑮ $m\angle A \approx 56.6^\circ$
 $m\angle B \approx 46.4^\circ$
 $m\angle C = 77^\circ$

⑯ side ≈ 486.4
entire circuit = 1096.4 meters
Will take ≈ 548 seconds ≈ 9 minutes.

⑰ ≈ 3.8 miles apart