

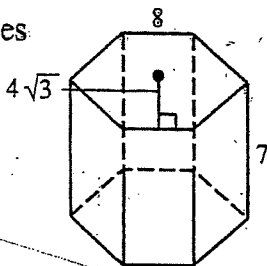
# Chap Practice Exam

Find the volume and surface area of each solid.

KEY for missing answers #1, 3.

#1-3 Key:  
See lesson on Prisms & Cylinders

1) regular hexagonal bases

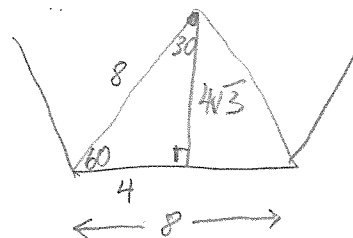


$$V = Bh$$

$$= \frac{1}{2} a p h$$

$$= \frac{1}{2} 4\sqrt{3} (48) (7)$$

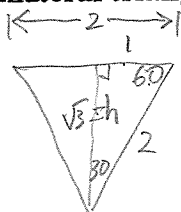
$$= 672\sqrt{3} \text{ cu. units}$$



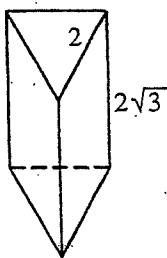
See for TA

2) A prism has a volume of  $420 \text{ cm}^3$ . Its base is a right triangle with sides of length 2, 3,  $\sqrt{13}$ . Find the height of the prism.

3) equilateral triangle bases



Base



$$V = Bh$$

$$= \frac{1}{2} (2)(\sqrt{3})(2\sqrt{3})$$

$$V = 6$$