

Variation Functions - Day 2 hw p392

③ a) inversely, $F = \frac{k}{L}$

e) 6.3 in.

b) $F = \frac{1890}{L}$

f) 37.8 in.

c) inch-pounds

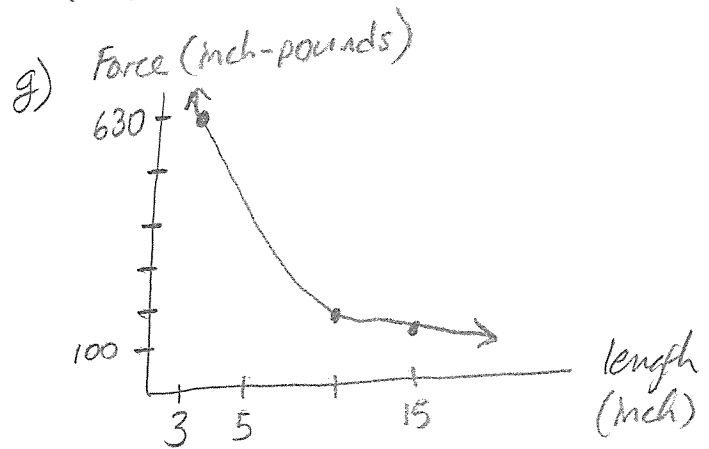
d) (3, 630)

(10, 189)

(15, 126)

(30, 63)

(60, 31.5)



⑧ a) 30 s

b) 250 h

⑨ a) $S = \frac{4000}{d^2}$

b) 40 units

⑬ a) directly

b) $F = 0.6W$

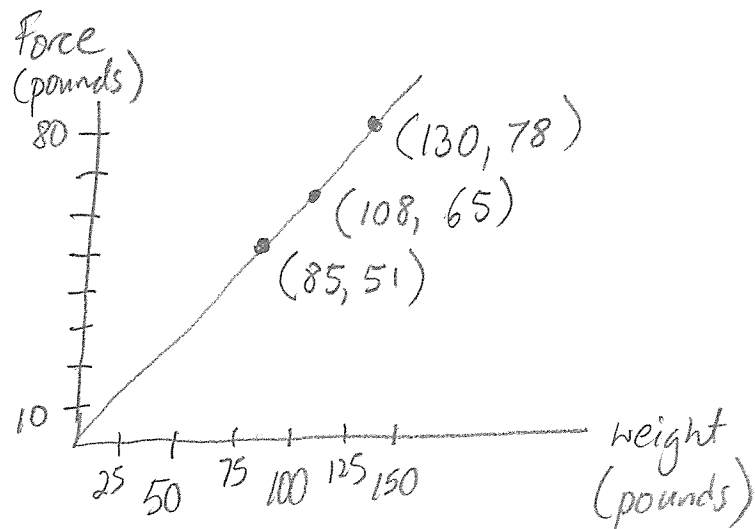
c) 78 lb.

d) 108 lb.

e) (130, 78)

(108, 65)

(85, 51)



⑰ a) \$2,000,000 ; very rare

b) 2¢, little demand